

Technical Data Sheet

CODE 12616

VORTICE 150/6" ARI-LL-S

Flush mounted axial fans



Certifications



IMQ



CE



IMQ Performance



EAC

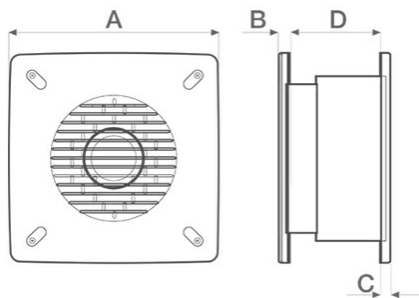


G-Mark

TECHNICAL AND PERFORMANCE DATA

Absorbed Current max (A)	0,17	Voltage (V)	220-240
Absorbed Power max (W)	35	Weight (Kg)	2,52
Frequency (Hz)	50/60	Delivery max - Extract (l/s)	97,2
Inlet	Automatico	Delivery max - Extract (m3/h)	350
Insulation Class	II°	Delivery max - Intake (l/s)	55,6
IP	X4	Delivery max - Intake (m3/h)	200
Max absorbed Power at 60Hz (W)	35	Delivery max (m³/h)	350
Max ambient temperature for continuous operation (°C)	50	RPM	2080
Max ambient temperature for continuous operation 60Hz (°C)	50	Rpm - Exhaust	2080
Nominal Diameter (mm)	190	Rpm - Supply	2460
Ø Discharge Hole (mm)	260 ÷ 265	Sound Pressure level Lp [dB (A)] 3m	49,1

DIMENSIONS



Ø wall hole	260/265
Size A (mm)	300
Size B (mm)	9,5
Size C (mm)	10,5
Size D (mm)	135

PER INFORMAZIONI:

Servizio al Cliente: tel +39 02 90699395 premendo 1 dopo messaggio registrato (consulenza su prodotti e impianti)

Pre & Post Vendita: fax +39 02 90699302

Email prevendita: prevendita@vortice-italy.com

Technical Data Sheet

CODE 12616

VORTICE 150/6" ARI-LL-S

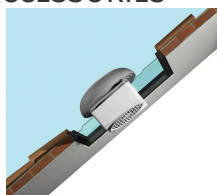
Flush mounted axial fans



DESCRIPTION

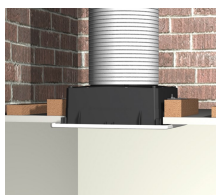
- Model designed for installation recessed into wall.
- Reversibility function (intake or extraction).
- Automatic shutter: prevents the entry of cold air and bad smells when the appliance is switched off.
- Material: UV resistant ABS plastic (prevents ageing caused by exposure to sunlight)
- Nominal diameter 150 mm.
- Motor protected against thermal overload, with shaft turning in ball bearings, coupled to screw type thermoplastic impeller with wing profile blades.
- IMQ SAFETY and IMQ PERFORMANCE certifications.

ACCESSORIES



KIT TE 150/6"
(TORRETТА)

Code 13001



KIT SO
(SOFFITTO)

Code 13012



KIT ML 150/6"
(MURO LARGO)

Code 13015



KIT TC 150/6"
(TETTO CON
CONDOTTO)

Code 13027

PER INFORMAZIONI:

Servizio al Cliente: tel +39 02 90699395 premendo 1 dopo messaggio registrato (consulenza su prodotti e impianti)

Pre & Post Vendita: fax +39 02 90699302

Email prevendita: prevendita@vortice-italy.com